



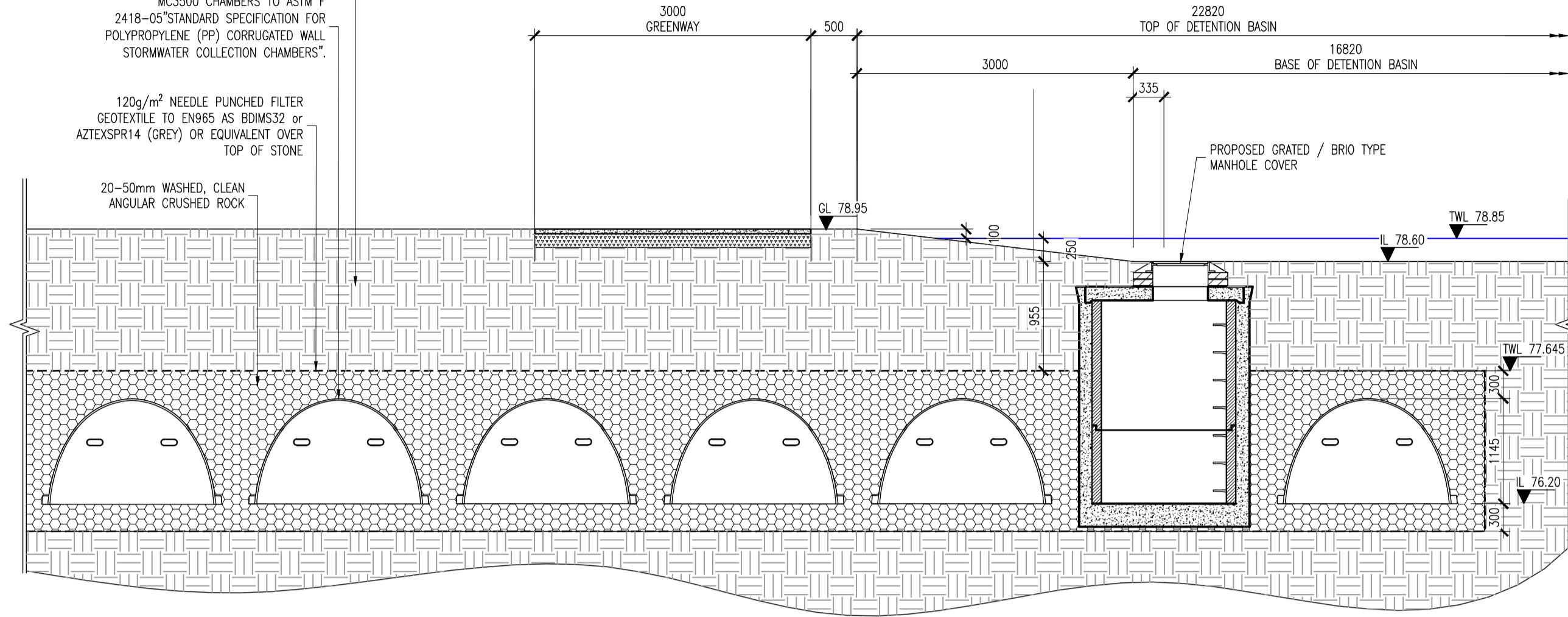
TYPICAL DETENTION BASIN
(STORAGE OF 100 YEAR -50 YEAR STORM EVENT ABOVE GROUND)

GRANULAR WELL GRADED SOIL/AGGREGATE MIXTURES, <35% FINES. COMPACT IN 15 CM LIFTS TO 95% PROCTOR DENSITY. SEE THE TABLE OF ACCEPTABLE FILL MATERIALS IN STORMTECH'S DESIGN MANUAL, INSTALLATION MANUAL, OR WWW.STORMTECH.COM.

MC3500 CHAMBERS TO ASTM F 2418-05 STANDARD SPECIFICATION FOR POLYPROPYLENE (PP) CORRUGATED WALL STORMWATER COLLECTION CHAMBERS.

120g/m² NEEDLE PUNCHED FILTER GEOTEXTILE TO EN965 AS BOMS32 or AZTEKSPR14 (GREY) OR EQUIVALENT OVER TOP OF STONE.

20-50mm WASHED, CLEAN ANGULAR CRUSHED ROCK

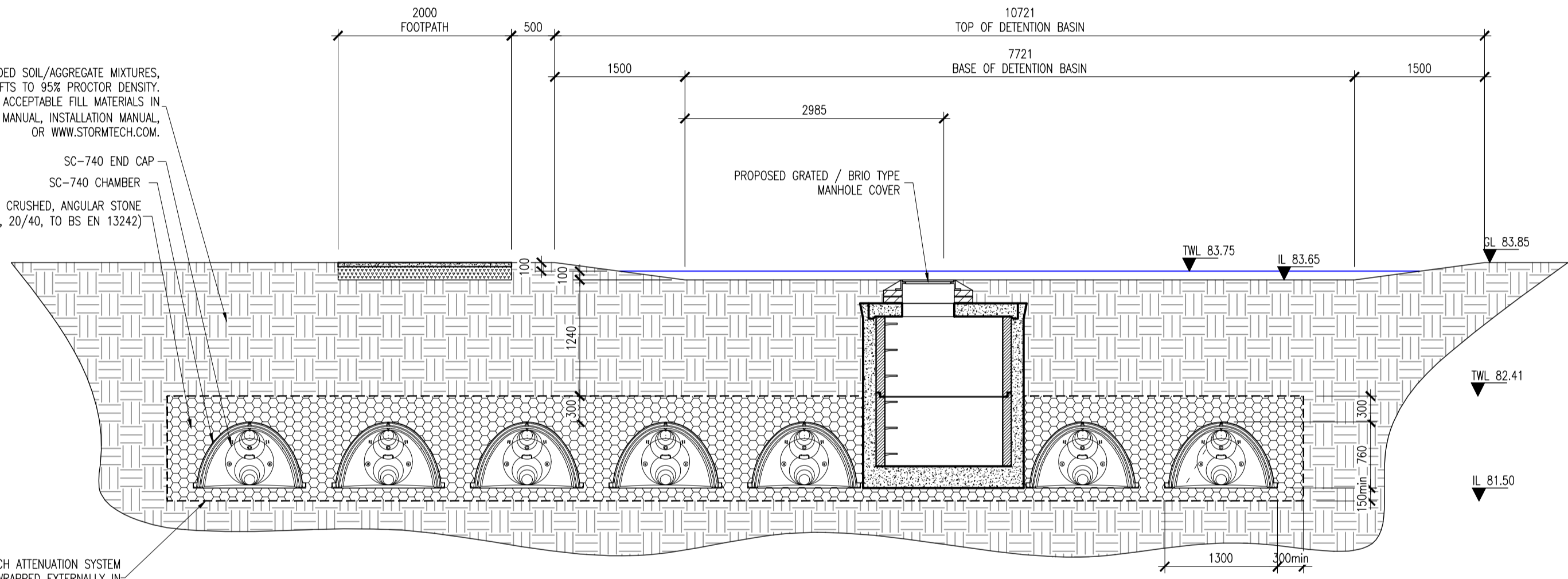


SECTION A-A CATCHMENT A
SCALE 1:50

GRANULAR WELL GRADED SOIL/AGGREGATE MIXTURES, <35% FINES. COMPACT IN 15 CM LIFTS TO 95% PROCTOR DENSITY. SEE THE TABLE OF ACCEPTABLE FILL MATERIALS IN STORMTECH'S DESIGN MANUAL, INSTALLATION MANUAL, OR WWW.STORMTECH.COM.

SC-740 END CAP
SC-740 CHAMBER
WASHED, CRUSHED, ANGULAR STONE (CLAUSE 505 TYPE B, 20/40, TO BS EN 13242)

STORMTECH ATTENUATION SYSTEM TO BE WRAPPED EXTERNALLY IN 2000 GAUGE POLYTHENE



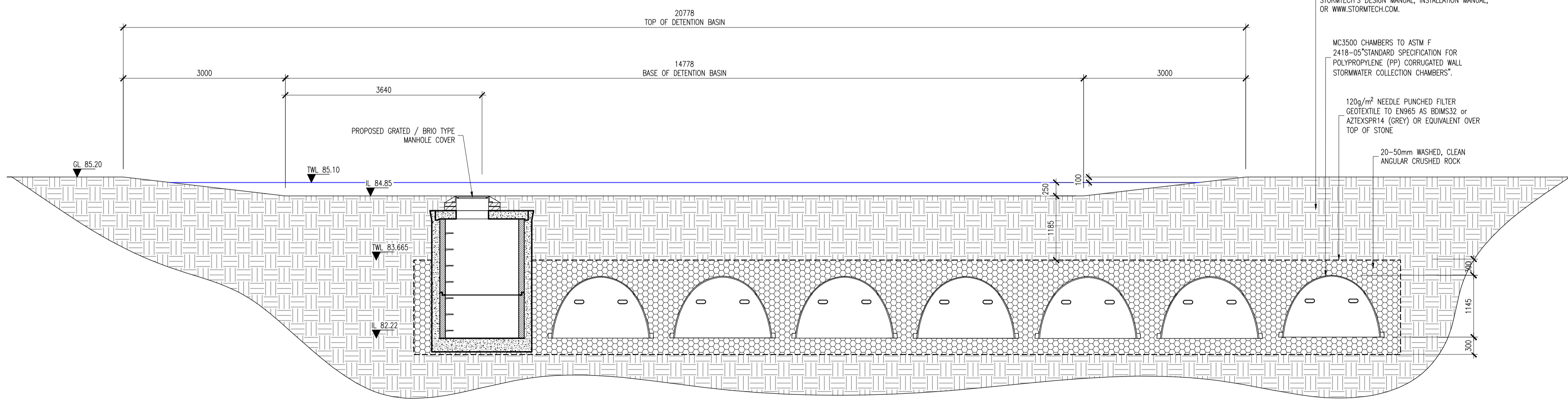
SECTION B-B CATCHMENT B
SCALE 1:50

GRANULAR WELL GRADED SOIL/AGGREGATE MIXTURES, <35% FINES. COMPACT IN 15 CM LIFTS TO 95% PROCTOR DENSITY. SEE THE TABLE OF ACCEPTABLE FILL MATERIALS IN STORMTECH'S DESIGN MANUAL, INSTALLATION MANUAL, OR WWW.STORMTECH.COM.

MC3500 CHAMBERS TO ASTM F 2418-05 STANDARD SPECIFICATION FOR POLYPROPYLENE (PP) CORRUGATED WALL STORMWATER COLLECTION CHAMBERS.

120g/m² NEEDLE PUNCHED FILTER GEOTEXTILE TO EN965 AS BOMS32 or AZTEKSPR14 (GREY) OR EQUIVALENT OVER TOP OF STONE.

20-50mm WASHED, CLEAN ANGULAR CRUSHED ROCK



SECTION C-C CATCHMENT C
SCALE 1:50

- GENERAL NOTES:
- ALL SURFACE WATER MANHOLES AND DRAINAGE ARE TO BE CONSTRUCTED IN ACCORDANCE WITH THE REQUIREMENTS OF THE GREATER DUBLIN CODE OF PRACTICE FOR DRAINAGE WORKS.
 - ALL FOUL DRAINAGE WORKS TO BE IN ACCORDANCE WITH IRISH WATERS' CODE OF PRACTICE FOR WASTEWATER SUPPLY AND WASTEWATER INFRASTRUCTURE STANDARD DETAILS.
 - SURFACES FINISHES FOR CONCRETE:
 - CLASS F1 FOR ALL CONCRETE 100mm OR MORE BELOW GROUND LEVEL.
 - CLASS F3 FOR ALL EXPOSED CONCRETE ABOVE 100mm BELOW GROUND LEVEL.
 - ALL EXPOSED CORNERS ON CONCRETE SHALL BE CHAMFERED WITH 25mm x 25mm CHAMFERS.
 - ALL STRUCTURAL CONCRETE (HEADWALLS, RC MANHOLES, PETROL INTERCEPTOR SLABS) TO RECEIVE MC DUR 1680 (OR SIMILAR APPROVED TAP MODIFIED EPOXY RESIN) TO ALL BURIED SURFACES TO FINISH 100mm BELOW GROUND LEVEL.
 - ALL SEWERS SHALL BE PRESSURE TESTED PRIOR TO BACKFILLING.
 - TYPE 1 GRANULAR MATERIAL : BROKEN STONE OR GRAVEL TO PASS 10mm SIEVE AND BE RETAINED ON 5mm SIEVE. TYPE 2 GRANULAR MATERIAL : BROKEN STONE OR GRAVEL TO PASS 10mm - 25mm SIEVE, ACCORDING TO PIPE SIZE (SEE TABLE) AND BE RETAINED ON 5mm SIEVE.
 - TYPE 3 SELECTED FILL : UNIFORM READILY COMPACTED MATERIAL FREE FROM TREE ROOTS, VEGETABLE MATTER, BUILDING DEBRIS, AND FROZEN SOIL AND EXCLUDING CLAY LUMPS RETAINED ON A 75mm SIEVE AND STONES RETAINED ON A 37.5mm SIEVE.
 - ALL LADDERS, RUNGS, SAFETY CHAINS etc SHALL BE HOT DIPPED GALVANISED TO BS 729 OR EQUIVALENT.

P01	04-11-19	ISSUED FOR PLANNING	JJB	BK
rev	date	description	by	chkd.
		A - Approved		
		B - Approved with comments		
		C - Do not use		

stability S2 - INFORMATION PLANNING

DBFL Consulting Engineers
Civil, Structural & Transportation Engineering
www.dbfl.ie

DUBLIN OFFICE Ormond House, Upper Ormond Quay, Dublin 7, Ireland
PHONE +353 1 400 4000

WATERFORD OFFICE Unit 2, The Chandlery, 1-2 O'Connell Street, Waterford, Ireland
PHONE +353 51 309 500

project ref. RESIDENTIAL DEVELOPMENT SCHOLARSTOWN

drawing title TYPICAL ATTENUATION DETAILS

architect JOHN FLEMING ARCHITECTS

designed by	author	scale	sheet size
BK	JJB	AS NOTED	A1
drawing no.		revision	
SCH-DBF-ZZ-XX-DR-C-3113		P01	